

# NEWSLETTER

## *Lower Hutt Forest and Bird*



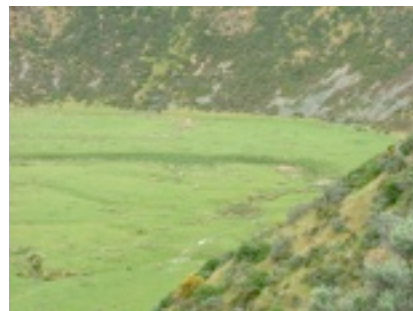
### **Baring Head**

You can see in this photo that in the past the Wainui river, or part of it ran down the channel on the left. If left to their own devices rivers increase in complexity. They weave from side to side. They create deep pools and shallow rapids. They have side channels and associated wetlands. But when we develop the land around them, we usually remove their complexity - turning them into a channel of more or less uniform width and depth and we make sure the channel stays in the same place.

Forest and Bird wants to restore the complexity of the lower reaches of the Wainui River and now that the area is part of a regional park, it is possible. The channel in the photo above is not the only one. There are many in the floodplain. Some hold water throughout the summer. Others are dry but can be identified by the topography and vegetation. See photos right. We will be joining "Friends of Baring Head" so we can influence this and other outcomes that will benefit the natural attributes of this area.

**Hutt City Estuaries**  
 Doc have released a document on all Lower Hutt estuaries - their condition and what needs to be done to each one. We support the intentions in the document and would try to organize workers when needed.

**Korokoro Valley**  
 Planting and weeding in the valley has been underway for years. They need to continue for years to come. Forest and Bird could add expertise and muscle to this worthy undertaking.




---

### PEOPLE FOR PROJECTS

#### **Contact**

To discuss involvement in any of these items, organisation, email list control, weed eradication, planting, etc. please contact Russell 380,6130 or [rbell@slingshot.co.nz](mailto:rbell@slingshot.co.nz).

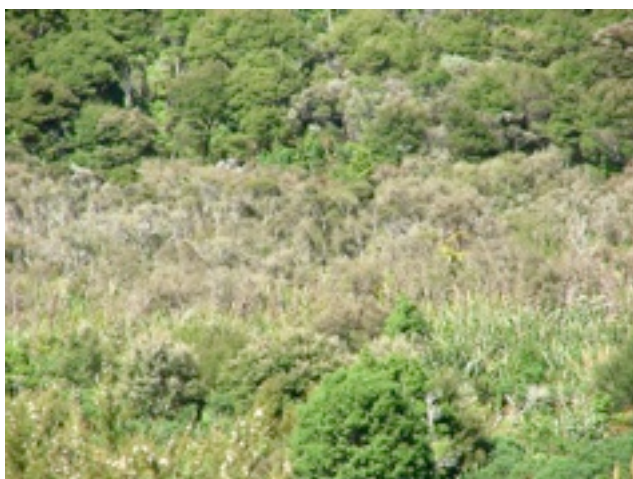
---

### UPCOMING EVENTS

12/1 Belmont trig via Takapu Road 4.5 hrs Mike Peers 2326822  
 16/1 9 am Waiu Wetland walkaround Discuss work to be done. Work as well 3 hrs Russell 380 6130 or 0212266047

19/1 Old wellington Walkways and ziz zags 4.5 hrs Janet 971 8200  
 26/1 Green String track Reikorangi Waikanae 5 hrs Cynthia/Don 04 902 0035  
 30/1 9 am Waiu Wetland work party

RESTORING WAIU WETLAND



Waiu Wetland is a special place - special because wetlands surrounded by intact native bush are rare, special because of the plant communities that exist, and special because it is accessible. Sure there are many weed species to be eliminated and there are drains that need to be filled in and regeneration needs many more years to recover from its past use. But the whole of its catchment is pro-

tected and the water in the stream is as clear as you would find anywhere and the shape of the land results in the stream fanning out and traveling under water tolerant plants to reappear where the land constricts the stream or where the stream has been channeled. Forest and Bird has an opportunity to restore this wetland to almost its former glory. There are some very difficult weeds to

eradicate and raising the water table in the lower half will require careful planning and implementation. But the more time I spend in Waiu, walking the circular track, removing weeds, planting, or thinking about how the effects of the drains put in years ago can be mitigated, the more I realize how valuable this accessible wetland is. But It does need our help.

ECOLOGICAL CORRIDORS



This is a regional project. Forest and Bird branches, councils and other groups are working towards connecting areas of ecological importance together or where they are already connected, changing the zoning or acknowledging that they will remain ecological corridors. This will future proof our natural areas as land not protected becomes further alienated. An example of this is the corridor across the Wainui Valley connecting Rimutaka Forest Park with East Harbour Regional Park. We appreciate Hutt City agreeing to this. If they had not, it is very likely that the two areas would one day become entirely separate. Now they have, Hutt City will manage the corridor as if it were a classified reserve.