

**Newsletters and Programmes  
on line or by email**

All Kapiti Mana Branch news is now available on line. You can find this at:

<http://www.forestandbird.org.nz/>

Click on WHAT'S ON IN YOUR AREA, click on Wellington in the side bar on the left and scroll down to Kapiti-Mana under Branches at the bottom of the page.

You will find the topic and speaker for the next public meeting and brief descriptions of the Branch's four conservation projects.

The side bar under Kapiti-Mana, on the left takes you to the most recent newsletters and programmes.

You can also see what the regional KCC members have been involved in recently.

By exploring around, you will discover more.  
— David Gregorie

**IMPORTANT NOTICE**

**From next year, members with email addresses will receive their programmes and newsletters by email only.**

**If you prefer hard copies, please email our membership secretary, Lore Leseberg,**

[hlleseberg@clear.net.nz](mailto:hlleseberg@clear.net.nz)

**and include the word UNSUBSCRIBE in the subject line.**

**Arbor Day at Pharazyn Reserve**



On Friday, June 4, children from Kapanui and Waikanae Primary schools arrived in well-coordinated relays to plant an area of Pharazyn reserve.

It was a real team effort with input from Forest & Bird, Friends of Pharazyn Reserve, KCDC, DoC, and hundreds of school children, teachers and helpers.

As each class arrived they were given an introductory talk by our own wonderful Lisa from DoC and her amazing cast of dead fauna, including the Pythonesque dead parrot (kakariki of course).

One little boy was very keen to know how the parrot ended up dead in Lisa's freezer.

Planting over, happy, tired, muddy children retreated to their bus and by day's end, 1300 new plants filled an unpromising swampy area at the water's edge. —

Gillian Corder

**Officers of the Branch:**

**Chairman:** Tony Ward 04-293-7203

**Secretary:** John McLachlan 04-904-0027

**Treasurer:** Maurice Andrews 04-904-2961

**Committee:** Bunty Cameron, Ian Corder, Judy Driscoll, David Gregorie, Lore Leseberg, Alison Pearce, Graham Petterson.

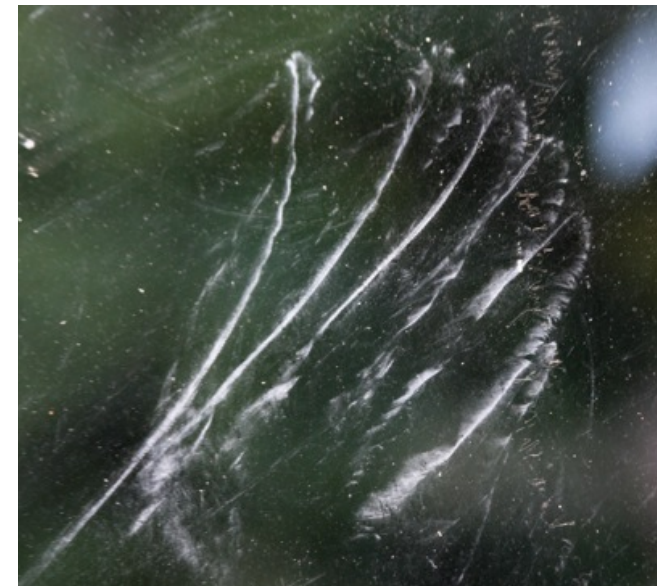
**KCC Kids invade Pukerua Bay**

A small group of hardy KCC kids braved a howling southerly and heavy showers to spend a late June Saturday working in the Nga Uruora nursery at Pukerua Bay School potting up native plants.

This was followed by a walk, while fighting to remain upright in the gale force winds, up the steep hill on the seaward side of Pukerua bay to a secret valley where they enthusiastically planted a whole hillside with natives.

These children deserve a medal for working so well and achieving so much in such bad conditions. Well done, KCCers. — Sharyn Gunn

**Feather Duster?**



I'm fortunate to have about four kereru in my Plimmerton garden most of the time as well as a kaka.

This image shows the imprint of a kereru wing on the window made by the dust from the dust baths the birds take to get rid of parasites. — Alwyn Parry

## Kapiti Island Visitor Experience

In August, 2009, the Department of Conservation commissioned a report from Tourism Resource Consultants about ways to enhance the visitor experience for Kapiti Island.

Kapiti Mana Forest & Bird was invited to comment on the report and contribute to the general debate about the issues raised.

After studying the report John McLachlan and I met Ian Cooksley of DoC in April, 2010, to discuss our concerns.

Our comments were well received and we were able to gain a better understanding of DoC thinking on some of the report's recommendations.

We have since made a submission to DoC which covered the following:

- The need to ensure that biosecurity is sufficient to minimise the risk of introduction of predators to the island.
- The need to reduce the risk of disruption to breeding birds in the spring and early summer.
- Effective management of visitors so that degradation of the island ecosystems is minimised.
- We did not support a single tourist operator having exclusive rights to take tours to the island
- DoCs proposal to improve the visitor reception and checking system at Paraparaumu Beach was supported.
- We did not support the idea of building a new track to the north end of the island but did support the creation of short side tracks for bird watching.
- We were strongly opposed to increasing the daily maximum number of visitors from 50 to 150 in the summer months.
- A proposal to take trips to the island for the dawn chorus and at dusk was not supported on safety grounds.

In general terms we were concerned that the report was focused only on the visitor experience and

did not consider the implications on the reserve status of the island and its integrity as a wild life sanctuary.

Kapiti Mana Branch of Forest & Bird has a good working relationship with DoC locally and we look forward to our concerns being reflected in the final plans to enhance the visitor experience on Kapiti Island. — Tony Ward

## Archey's Frog



The critically endangered Archey's frog from New Zealand represents one of the world's oldest amphibian lineages. Conservationists are concerned by a proposal to open some of its remaining habitat for mining. This could wipe the species out completely. — BBC

## Branch Barbecue

**Next year's Branch Barbecue on Saturday, February 19, will give members a chance to inspect the restoration work undertaken by a dedicated team of Kapiti F&B members over the past 14 years.**

**Full details of the barbecue and how to get to the Kaitawa Reserve are given in the new Summer Programme which is out now. See maps at:**

**<http://www.forestandbird.org.nz/what-we-do/branches/kapiti-mana/kapiti-mana-notice/branch-barbecue>**

## Eels in Danger



For 65 million years, our longfin eel has migrated to breeding grounds around Tonga.

Trouble is, it's the last thing they'll do and many don't start their journey until they're 30, 40 or even 100 years of age.

Our commercial fisheries are snapping them up before they can make a family, and now they're as endangered as our great spotted kiwi.

Help save our longfin eel by signing our [petition](#). — Mike Joy

## WORKING WITH THE KCDC

The KCDC has invited the Branch to join in the development of a plan to combat erosion and restore in-stream habitat in the Wharemauku Stream, using newly developed bio-engineering techniques.

The stream runs through the Kaitawa Reserve, which F&B volunteers have been revegetating for the last 14 years. — John McLachlan

Editor: David Gregorie, 04-904-2183  
— contributions for the next issue by  
March 7, please. [dgrie@paradise.net.nz](mailto:dgrie@paradise.net.nz)