



Forest & Bird

TE REO O TE TAIAO | *Giving Nature a Voice*

PROGRAMME FEBRUARY - MAY 2018

Talks are held on the **2nd Wednesday** of the month at **Tahunanui School Hall, Muritai Street, Tahunanui at 7.30pm**. Contributions for **sales table and raffle** are most welcome. Gold coin donation towards hall hire please.

DATES FOR YOUR DIARY

FEBRUARY	10	PEARL CREEK weeding from 9 am
	14	"MUCK DIVE" Dr Andrew Hamilton
	24	BELL ISLAND Coastal and Migratory Birds Willie Cook
MARCH	3	SEA WEEK KCC Sally Leggett
	14	NELSON NATURE Leigh Marshall
	23-25	MANGARAKAU SWAMP LODGE Camp
APRIL	11	SUBANTARCTIC PLANTS & WILDLIFE Jane Gosden
MAY	9	THE ROSS SEA TOOTHFISH FISHERY - Balancing Conservation With Rational Use". Stuart Hanchet

FEBRUARY

Saturday 10 Pearl Creek weeding from 9 am

Meet at the end of Cotterell Rd, off the Appleby Highway opposite the Inland Moutere Highway turnoff. We will attempt a grid search of the area for Old Man's Beard as well as weeding around plants, removing plant protectors and organising them for the next planting in Autumn.

Wear stout footwear, gardening gloves, bring secateurs, small spade or favourite weeding tool.

Contact Jo Kay robjokay@xtra.co.nz, 03 544 9666 or 021 1169 877

Wednesday 14 Muck Diving Andrew Hamilton



In tropical waters it is coral reefs that generally attract much of the attention of the underwater photographer - however in recent years there has been growing interest in a new area, that of tropical water 'muck' diving. The latter gets its name from the sediment that lies at the bottom of many dive sites - a frequently muddy or "mucky" environment. The term was first used to describe diving off the beaches made up of black sand in Milne Bay in Papua New Guinea - the "muck" substrate can be the habitat for unusual, exotic and juvenile organisms that make their homes in the sediment that compose a muck dive. The environment of a typical muck dive has a very different ecology to the more well known tropical reef habitat. In this talk Dr Andy Hamilton will present a colourful selection of photos and short films detailing the fascinating, bizarre and often outrageous inhabitants of muck dive sites in Bali and North Sulawesi in Indonesia

Saturday 24 Bell Island Shell Bank Willie Cook will lead a small group to view coastal and migratory birds living on Bell Island shell bank. We will meet at 3.00pm. Please give names to Julie 545 0989. **Number limited to 20**

MARCH

Saturday 3 Sea Week - KCC Contact Sally Leggett sleggett@doc.govt.nz

Wednesday 14 Nelson Nature Leigh Marshall, Environmental Programmes Advisor for Nelson City Council, will give a presentation on Nelson Nature. Nelson Nature is a 10 year programme funded by Nelson City Council to protect and improve biodiversity values in the Nelson region. Nelson Nature works closely with other agencies and the community to protect and enhance key ecosystems including Dun Mountain, urban and rural waterways, coastal habitats and Significant Natural Areas that occur on private land. Nelson Nature is also working closely with the Brook Waimarama Sanctuary and community groups to develop wider predator control for wildlife recovery outside of the Brook Sanctuary. The Nelson Branch of Forest and Bird is an important partner with many projects that fall under Nelson Nature's umbrella, including the Dun Mountain restoration project and coastal restoration projects.

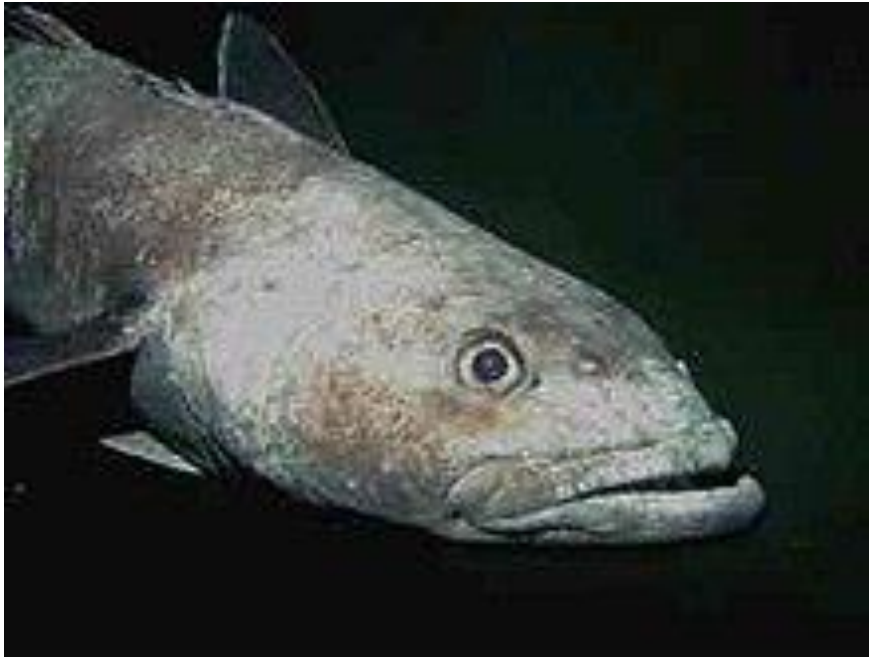
Friday 23-Sunday 25 Weekend Camp at Mangarakau Swamp Lodge, North-west boundary Kahurangi N P. There is some fire wood that needs to be moved and bat detectors to be set out. Contact Julie nikau48@gmail.com

APRIL

Wednesday 11 Subantarctic plants & wildlife Jane Gosden. Jane has visited the New Zealand Subantarctic Islands twice and spent three and a half months living on the Australian Subantarctic Macquarie Island. Come along and hear about traveling South, living in the Subantarctics and of course the unique flora and fauna found on these cold, windswept islands. There will be many pictures of plants, seals and penguins.



MAY



Wednesday 9 The Ross Sea Toothfish Fishery - balancing conservation with rational use
Stuart Hanchet, Programme Leader International Fisheries, NIWA

JUNE

Wednesday 13 Ranger Trainee Course Beth Endres Tutor in charge of Trainee ranger course
at NMIT.

Want to help conservation for a few hours a month?

Based in the Nelson F&B office, we're looking for a volunteer for a few hours once a month, to assist with office administration – mainly filing, review of plans, and organising our campaign materials. Not much experience needed, as staff will be there to support you. An interest in conservation, and some attention to detail is needed. Times can be flexible. Please email Debs on d.martin@forestandbird.org.nz if you can help.

Paremata Flats Restoration Project

Come and join us on Tuesdays from 9 to 3 for our regular forest restoration effort.

Our aim is to give our native trees the best chance of reaching maturity and to achieve this we need to clear out invasive plants and bush to enable the canopy trees to reach the light. Come and have a bit of fun while restoring a little bit of New Zealand. If you would like to get involved or if you need more info contact Julie 5450989

Molesworth Station Are you interested in the future of Molesworth Station? DOC is presently conducting a survey to determine the future of Molesworth Station and asking for expressions of interest from the public.

Have your say. <https://www.surveymonkey.com/r/Molesworthconsultation>

Forest and Bird Dun Mountain Restoration Project

The Nelson/Tasman branch of Forest and Bird has entered a partnership with Nelson City Council in order to assist NCC in their efforts to restore the Dun Mountain area which is threatened by a number of weeds including wilding conifers, gorse and Spanish heath. F & B has been successful with a recent DOC Community Grant application which will provide additional funding for the next three years to supplement the efforts of NCC.

The Dun Mountain area is contained within the Nelson City Council's Maitai and Roding Water Reserves. The Dun Mountain ultramafic area is a high value ecological site.

It is an example of an uncommon geological formation made up of mantle rock with high mineral content. Similar geology is seen in South West Southland, the two areas having become separated over hundreds of millions of years by movement along the Alpine Fault. The vegetation in the ultramafic area of the Dun Mountain is highly specialised and contains a number of endemic and threatened species. The low growing vegetation closely follows the underlying mineral belt and there are dramatic junctions where stunted vegetation abuts lush forest growing in more fertile soil.



Mike, watched by Penny, Steve and Julie saws down a Douglas Fir, a particularly pestilential conifer

Invasive weeds, particularly wilding conifers, are a key threat to the fragile and unique mineral belt ecosystem. Wilding conifers have a direct competitive effect while gorse has the ability to improve soil fertility thus inviting new weeds to establish. The first step in the ecological restoration of the Dun Mountain is the removal of wilding conifers but gorse and Spanish heath is also being targeted. A small group of F & B recently volunteered for a hot and tiring day of wilding conifer removal. We cleared approximately 10ha of young conifers some of which were beginning to cone. The day emphasized that most of the initial conifer control will need to be contract work and our focus will continue to be on raising additional outside funding to supplement the Nelson Nature budget. The Dun Mountain area holds many important values for the wider community. A number of Nelson iwi have cultural ties to the

area. Local Maori quarried pakohe or argillite for the construction of adzes and other tools in the area of the Rush Pools. The spread of wilding conifers would degrade this important wahi tupuna (pakohe archeological site). Early colonial settlers mined the area for copper and chromite and the ore was transported on New Zealand's first train line. The Dun Mountain area has a long history of recreational use being the main access from Nelson to the Mount Richmond Forest Park. The area is highly regarded by mountain bikers with many visitors, both local and international, riding the trails. The Dun Mountain Trail is one of the official New Zealand Cycle Trails. Walkers, naturalists, trampers and tourists appreciate its proximity to Nelson City. The project thus offers opportunities for wider cooperative community and council restoration efforts.

www.Forestandbird.org.nz www.kcc.org.nz

c/- 6 Sequoia Way Stoke Nelson 7011