

# Mahoe-nui Bush Restoration Project

## How to get there

---

Mahoe-nui Bush is a gully located behind Sumner Valley on the Port Hills.

The **Upper Site** is above the Summit Road, 900m west (towards the city) from Evans Pass (the pass that goes from the back of Sumner Valley over to Lyttelton).

It is fenced, and you can see flaxes and other plantings up the gully.



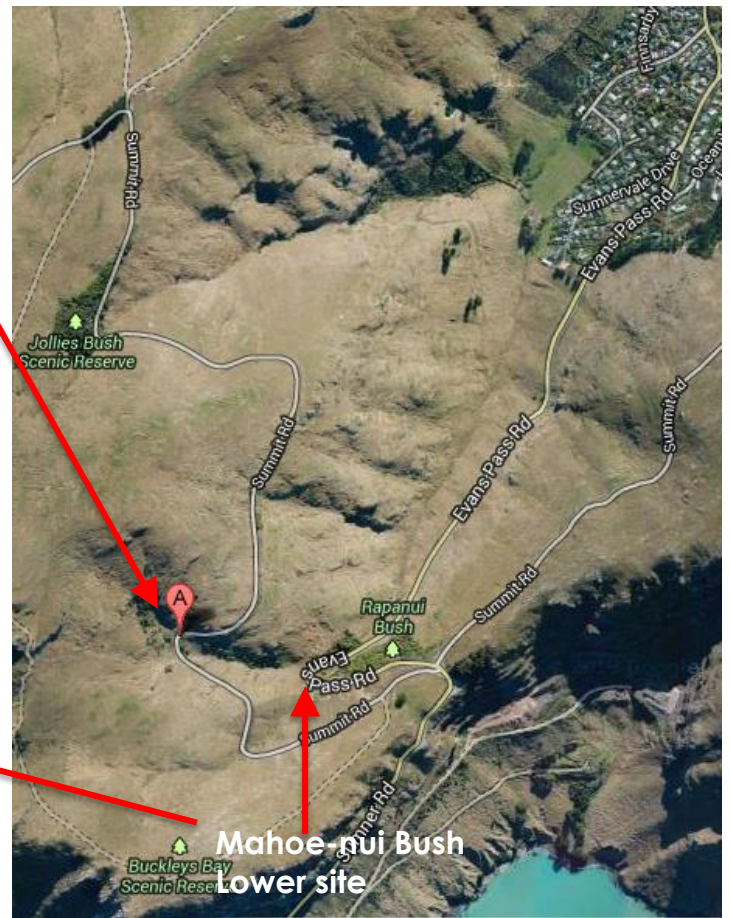
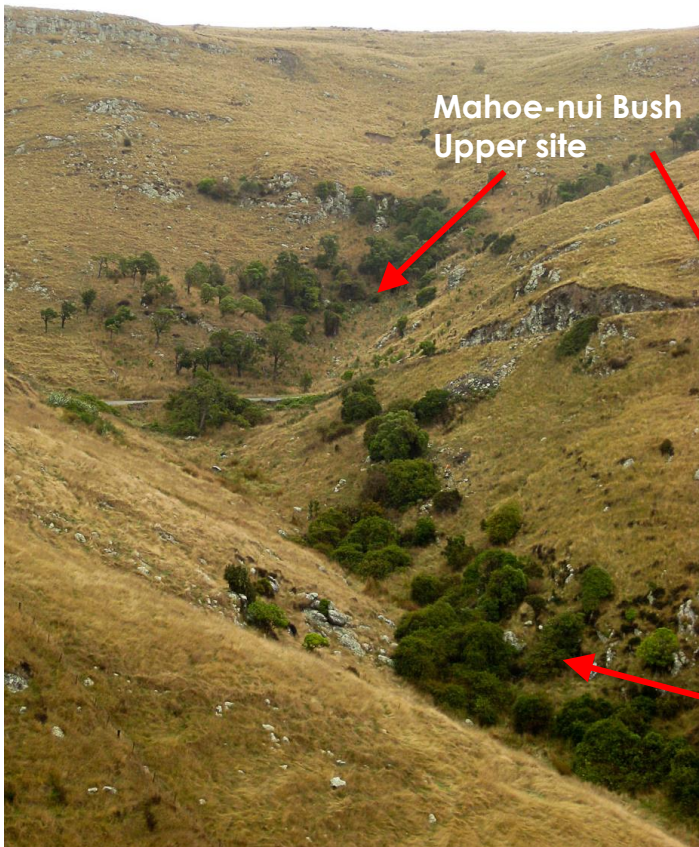
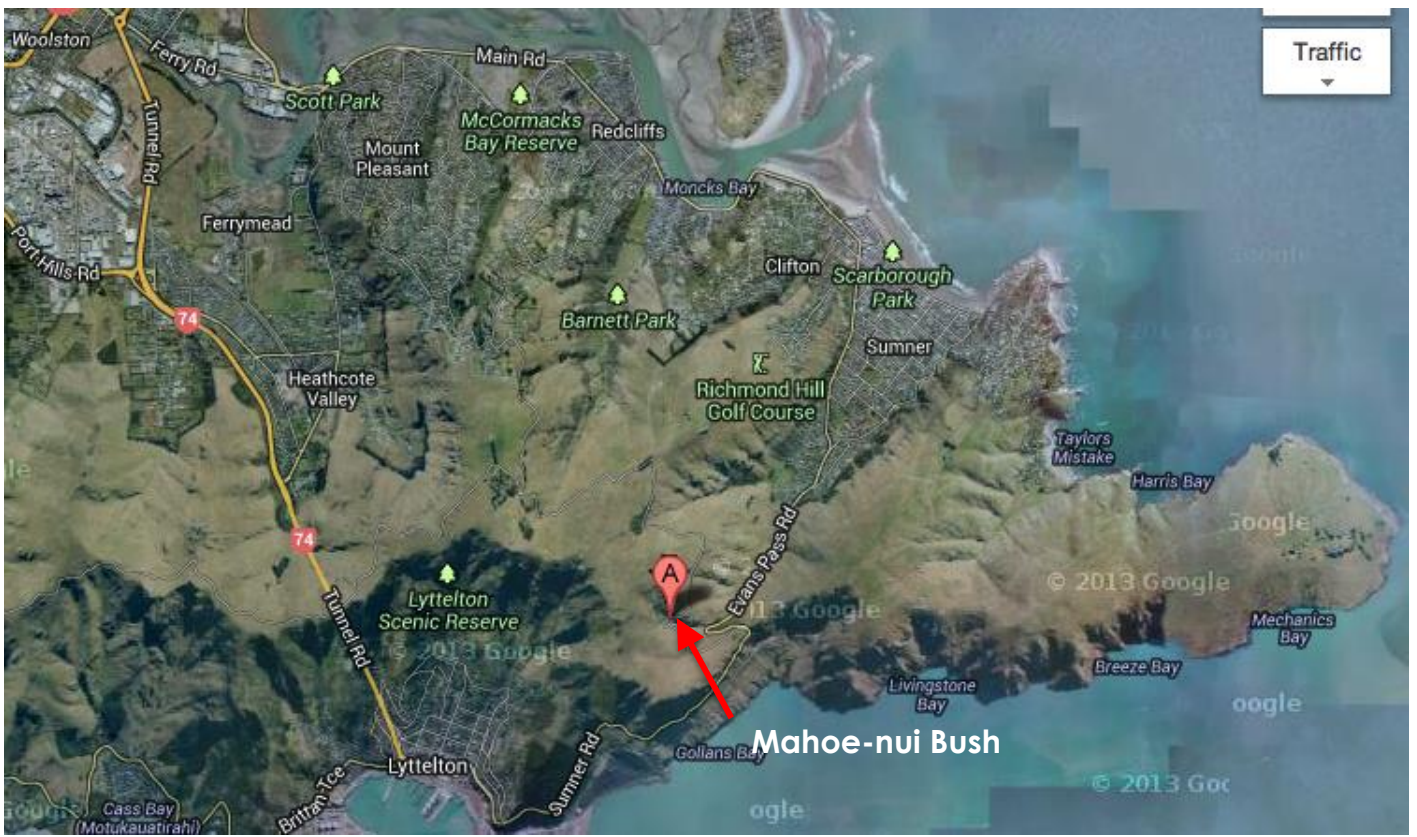
- To get there, drive to Sumner, and when you get to the village, carry on along Wakefield Road (along side the containers) to the very back of the valley where you can get on Evans Pass Road.
- Drive up to Evans Pass and then turn right onto the Summit Road.
- After 900m you will arrive at a sharp right-hand corner – Mahoe-nui Bush Upper Site is on the left.
- From Mt Pleasant, drive up Mt Pleasant Rd until you hit the Summit Rd & turn left. Drive towards Sumner. Mahoe-nui Bush Upper Site is the last major corner before Evans Pass (the next major gully after Jollies Bush).
- Please note: the Summit Road is closed between Mount Pleasant and Cashmere.

**Mahoe-nui Bush Lower Site** is located between the Summit Road and Evans Pass Road. Parking in the layby on the left near Rapanui Bush.

## Parking

---

There is only space for a half a dozen vehicles at Mahoe-nui Bush Upper Site, so it's best to carpool if you can. For volunteer days if you would like to carpool, meet at Evans Pass 15 minutes before the event.



## Contact

If you have trouble finding it, or have any questions, please contact Vanessa on 021 0255 6918 or Peter on 021 023 54473. There is limited cell phone coverage at the site.