

# NEWSLETTER September 2020

## Kāpiti - Mana Forest & Bird



*Raumati Wetlands after a rain event*

Editor: Russell Bell, Email [russelljamesbell@gmail.com](mailto:russelljamesbell@gmail.com). Phone 0212266047. Your feedback on this newsletter would be most welcome as would contributions to future newsletters.

### Contents

Chairmans Opinion Piece - Raumati Wetlands  
Nga Manu  
Watch Little Blue Penguins

Calendars and Diaries  
Voting this election  
Branch Contacts

### Chair's Opinion Piece

The Good News - Success

On Tuesday 22 September I spoke in favour of a proposal to restore about 85 hectares of wetland at Queen Elizabeth Park and to replant 85 hectares of forest. This proposal was written by GW Parks and put to the GWRC climate committee for approval, then on 24 September it was agreed by the full council so now the work can start.

The area is all the peatlands/drained Wetlands north of Waterfall Stream - where Waterfall road used to join SH1. (The large blue hashed

area in the map below.) It will be a big wetland and some would say that we should be satisfied. But all around the world drained peatlands are being recognised as an issue for climate change because they will continue to emit carbon at a rate of about 29 tonnes per hectare per year until all the peat is gone. So we cannot stop advocating until the entire peat area in QEP is rewetted.

The second part of this proposal was the establishment of about 50 hectares of forest in

the southeast corner of the park. (The hashed green area.) Again this is a major undertaking.

There are three other smaller areas that are important to us. The small round hashed wetland near Raumati south. See photo 1. The long green hashed area alongside Waterfall Stream - this also contains a small wetland, and the green and blue hashed area between all the blue south of Whareroa Road - a sand-dune wetland complex See photo 2.

\$1.3million was assigned to this project.

The sort of Good News

We opposed the proposal to let a contract for 3 years to graze the remaining peatlands south of Waterfall Stream. We are not opposed to grazing the dunes. The council modified the proposal so they could cancel the contract land is needed for environmental purposes.

*Russell*

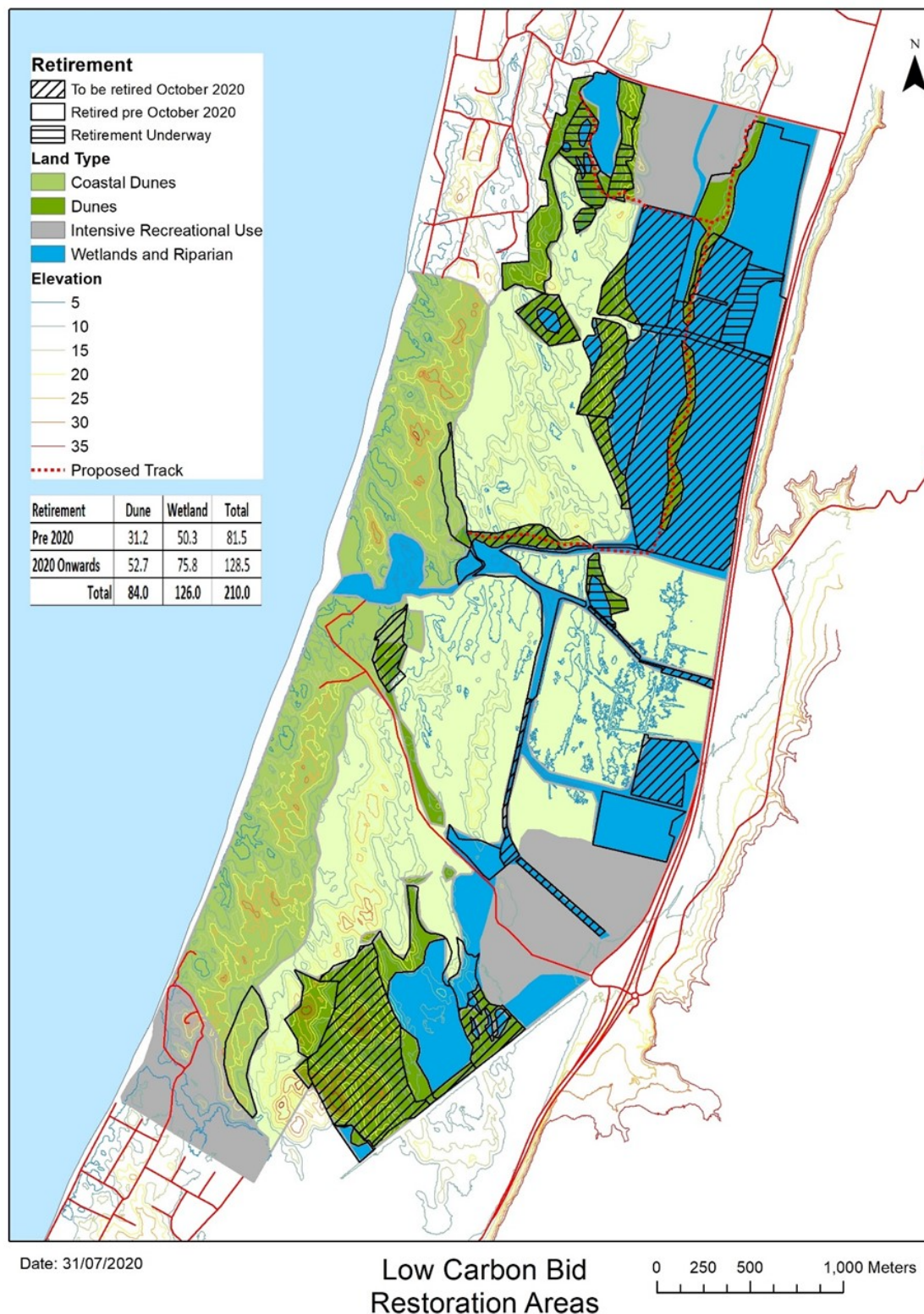




Photo 1



Photo 2



## Nga Manu

Nga Manu Nature Reserve is a wonderful place to be, with a wonderful purpose. The reserve is within a remnant piece of podocarp swamp forest. It provides a place for visitors to learn about New Zealand flora and fauna, and it is also involved with breeding for release of several species of lizard, yellow-crowned parakeet, whio (blue duck) and pāteke (brown teal), along with tuatara, kākā and North Island Brown kiwi. Some of you may have seen that

the young parent kiwis - Ātaahua and Puha - have hatched a chick (with some help from our friends at Pukaha Mt Bruce), and are about to 'go it alone' for the first time with number 2 egg this season. Very exciting! There are lots of opportunities to volunteer at Nga Manu - at the customer service desk, leading tours, trapping, or helping maintain and develop the grounds and forest. Check out their website for more information : <https://ngamanu.co.nz/volunteer/>



## Kororā -Little Blue Penguins - Watch them live

We are very fortunate to have the world's smallest penguins, also known as Fairy Penguins living in our region. Their conservation status is 'At Risk - Declining'. Kororā are found on Kāpiti and Mana Islands, along the coast - especially close to Paekakariki - and you might just see one from the East by West Ferry in Wellington Harbour. We don't often see them but if you're very lucky and early you might spot their footprints on a beach in Kāpiti, especially between August and March when they come ashore to breed and to moult. They are not as agile out of water, so at these times they are extremely vulnerable to predators. Dogs are a particular problem (so please keep them on a lead). After all, even humans want to chase cute doll sized

birds in metallic blue dinner suits as they waddle up the beach! A safe way to get your fill of watching them is through this nest cam (chicks are expected in about a week's time), here's an 8 minute taster of the changing of the guard: <https://www.youtube.com/watch?v=C7kxBgRBuso>



## Forest and Bird Dairies and Calendars

The Forest and Bird calendars and diaries are beautiful - with photographs by Craig Potton and others, make great Christmas presents and our branch's only annual fundraiser. Calendars come with an envelope.

We are keeping prices low at  
\$15.00 calendar  
\$23.00 diary

Our treasurer, Peter Kentish is the person to contact for your copy/ies  
[pk2003\\_595@hotmail.com](mailto:pk2003_595@hotmail.com)

or 04 298 1255 or 021 027 70520

You can pay by online banking account number 38-9020-0171967-00 (Forest and Bird Kapiti Mana Branch) or with cash when Peter delivers.

We would prefer no cheques because our bank no longer accepts these, but if necessary cheques can be made to "Peter Kentish – F&B Kapiti-Mana Treasurer", and he will arrange for the transfer of funds to the branch.

## Voting this election

Forest and Bird has not (within my memory) advised how to vote. That is because we need to work with no matter who or what combination gets into power. We need to make gains for the environment and nature. But what

F&B have done is ask the parties 5 questions and posted the replies. You can find the questions and answers here.

[Inform your vote.](#)

## Branch Committee Contacts

We have had a form of scam attack on our branch. We did not fall for it so all is well but I have decided that putting the committee's contact details at the end of the newsletter leaves us wide open for a

certain types of attack. Consequently we have decided to remove all but one contact.

Chair: Russell Bell [russelljamesbell@gmail.com](mailto:russelljamesbell@gmail.com)  
M 021 2266047