



FOREST & BIRD TOURS SUPPORTING CONSERVATION

Western Australian
Wildflowers and Wildlife

Wild Tasmania – Marsupials,
Flora and Wildlife

These are fundraising tours for Forest & Bird. A base fee contributes to the advocacy of Forest & Bird, along with all profits from the trips.

The tours are being led by **Mark Hanger**, President of Forest & Bird, and a nature tour leader in New Zealand since 1985, Western Australia since 2002, and Tasmania since 2006

There will be a maximum group size of 20

Most areas are easily accessible to all, with a small number of walks in rougher hill country.

Western Australian Wildflowers and Wildlife

Departs Perth, 3rd September &
11th September 2023, and again
with same dates in 2024.





The south-west of Western Australia is a vast botanical garden. The arid interior stands in stark contrast to a magnificent, scenically dramatic coast. Both contain a huge variety of spectacular flowering plants. Tall forest, woodlands, shrublands and heath are home to over 4,000 species - 80% of which grow nowhere else - a truly remarkable flora. Mid-spring is the time when the flowers are at their best; Banksias, Grevilleas, Hakeas, Wild Peas, Myrtles, Kangaroo Paws and many more all combine to create a colourful botanical extravaganza. Many are alongside the roads, so for the most part, walking is easy on this trip.

The tours, which commence and conclude in Perth, concentrate on discovering and acquiring an insight into the magnificent array of wildflowers in the state, whilst also gaining a deeper appreciation and understanding of the wider natural heritage and conservation issues facing the vast state.



The Perth hinterland is as diverse as it is fascinating. The journey of discovery begins with a short drive inland for walks to observe the flora on the Darling Range. Our route then takes us to the Pinnacles National Park where we will walk amidst these magnificent forms as the sun sinks low in the sky.

A special day will be spent exploring the private Hi Vallee property, near Badgingarra, with its owners. This private farm and nature reserve is home to a wonderfully diverse range of West Australian native plant communities and includes a number of endemic and near endemic species.

Further north lies the Kalbarri National Park. A huge variety of wildflowers clothe the plains surrounding the Murchison River gorges, and the coast. Both the sand plains and the coastal cliffs abound with magnificent displays of river gums, gold and orange banksias, grevilleas, kangaroo paws, featherflowers, starflowers and smokebushes.



Turning southwards, the shrublands give way to the renowned everlasting wildflowers south of Geraldton. Inland the climate supports near desert species and at Tallering we shall view the superb wreathflowers and other dryland plants.

Passing through the coastal shrublands, many roads are lined with what appear to be veritable botanic gardens ablaze with colour. Overnight will be spent back in Perth, with time the following day to visit the Kings Park Botanic Gardens.

East of Perth lies the Dryandra woodlands, a botanically rich and diverse 'island' surrounded by agricultural land. From our base in the town of Narrogin we may take an optional evening excursion to view endangered marsupials.

Heading east leads to the Fitzgerald River National Park, a region of remarkable contrasts. Enjoy shrublands including such world renowned species as royal hakea, pincushion hakea, four-winged mallee, scarlet banksia, Quaalup bell, and the Barrens regelia. Hopetoun is the base from which to explore East Mount Barren.



and the eastern fringe of this large national park, whereas the western section will be explored from the Albany side. The southern coastal cliffs of this park provide great viewing points through spring of breeding Southern Right Whales.

A highlight of any visit to Western Australia is the Stirling Range. This dramatic national park has over a thousand species of flowering plant. A hike up onto the summit ridge and Bluffy Knoll brings flowers in abundance while on the rocks a variety of lizards are evident.

Returning to Perth via the south coast we take in the famed Karri-Tingle and Jarrah-Marri forest of the wetter regions. Walk amidst the canopy of these magnificent trees and gain a better insight into the intricacies of the forest and fire relationship.

Travel is by comfortable minivans equipped with an excellent nature library. Accommodation is in comfortable hotels and motor lodges, with private facilities.



Sector 1 : Perth Northern Circuit - Ellis Brook Reserve, Pinnacles, Lesueur National Park, Kalbarri, Hi Vallee, Wreathflowers, Desert flora, Kings Park

Departs: September 03 2023, Perth.
(9 days)

Price: These prices are GST inclusive and are per person twinshare : **\$NZ3490.00**

Includes:

Services of tour leader, Mark Hanger.
All tour travel departing and terminating in Perth.
All meals through to breakfast on Sept 11.
All accommodation, twin share with private facilities in hotels and lodges.
Information booklet including species lists and ecological information.
All national park permit fees.
Goods and Services Tax of 10%.

For Single Room add \$NZ480.00

For additional nights in Perth add \$NZ190.00.

To book, complete booking form along with a deposit of \$NZ900.00.



Daily Itinerary

Sep 03 Arrive Perth. Transfer to hotel in central Perth. This evening meet group and Mark Hanger. Stay Rendezvous Hotel two nights.

Sep 04 A morning introduction to WA flora in the renowned Kings Park Botanic Gardens. Afternoon walk on the granite outcrops at Ellis Brook. Here the lower valley slopes have some of the highest concentrations of wildflower species in the Perth region.

Sep 05 Drive north from Perth to Cervantes. Gain an introduction to the heathland flora so prevalent on the sandplains to the north of Perth. On route north we shall also visit the renowned Pinnacles region near Cervantes. Stay Cervantes two nights.

Sep 06 A day excursion on to the vast Hi Vallee Farm. Explore this botanical treasure trove by 4WD stopping numerous times to further investigate the myriad of plant species. This region has an incredible array of WA wildflowers and we shall be visiting right at peak flowering. Enjoy a full day drive around the property with the owners to view and photograph orchids, grevilleas, and dryandras, not to mention many species of West Australian birds.

Sep 07 Depart for Kalbarri National Park. The Northampton roadsides shall enthrall us, while the Zuydorf Cliffs region is home to a very different flora this afternoon. Stay Kalbarri two nights.



Sep 08 A day in the Kalbarri National Park, discovering the huge variety of wildflowers, the Murchison River gorges, and the coast. Both the sand plains and the coastal cliffs abound in magnificent displays of river gums, gold and orange banksias, grevilleas, kangaroo paws, featherflowers, starflowers, and smokebushes. From lookouts above the gorge Euros and Western Grey Kangaroos may be spotted, while lizards frequent the bluffs, and parrots the valley tree tops.

9

Sep 07 This morning we turn inland to the dry Tallering region. Here amidst the sand and shrubland grow perhaps the most spectacular of WA's wildflowers, the wreathflower (*Lechenaultia macrantha*). The flora in this region is markedly different from any other area on the trip. Other special plants we may be lucky to see include native pomegranate, Pink Fountain (*Stylidium brunoniamum*), Wells dampiera (*Dampiera wellsiana*). Stay Dongara this evening.

Sep 10 Lesueur National Park covers 27,000 hectares and is the third largest of Western Australia's National Parks. Amongst over nine hundred flower species are rare *Banksia tricuspis* (Lesueur Banksia) and *Banksia attenuata* (Slender Banksia). We will look for the diminutive Flying Duck Orchid and *Xanthosia tomentosa* (Southern Cross) and spiny *Synaphea spinulosa*. Continue to Perth. Stay Rendezvous Hotel Perth.

Sep 11 Day of departure back to Aotearoa New Zealand. If taking the southern sector then :

Free day to explore Perth, take a Swan River excursion, visit renowned Rottneest Island with its endemic marsupial Quokkas, take in historic Fremantle, or further explore Perth's famed Kings Park.



Sector 2 : Southern Circuit – Hyden, East Mount Barren, Fitzgerald River Biosphere Reserve, Stirling Range, d’Entrecasteaux National Parks, Southern Forests

Departs: September 11 2023, Perth, Western Australia. (10 days).

Price: These prices are GST inclusive and are per person twinshare

\$NZ3565.00

Includes

Services of tour naturalist, Mark Hanger.
All tour travel departing and terminating in Perth.
All meals except lunch and dinner on Sept 11.
All accommodation, twin share with private facilities in hotels and lodges.
Information booklet with background ecological information and species lists.
All national park permit and admission fees.
Goods and Services Tax of 10%.

For Single Room add \$NZ485.00 per person.
For additional nights in Perth add \$NZ190.00 room only.

To book, complete booking form along with a deposit of \$NZ900.00 .



Sep 11 Arrive Perth and transfer to Rendezvous Hotel.

Sep 12 Travel to Hyden. Dotted across the landscape inland of Perth are wonderful granite outcrops. We discover the distinctive flora of these on route to Hyden. There's time to visit the famed Wave Rock, and to search for local orchid species and lizards scurrying across its surface. Stay Wave Rock.

Sep 13 We depart for the southern coast. This brings new landscapes as the vast interior of Western Australia beckons. It is a travel day as we head to the Ravensthorpe Range and Hopetoun region. Features on route will be the salt pans of Lake King, and widespread roadside shrublands ablaze with colourful flowers. In this region, Western Tiger Snakes may be seen, while Southern Heath Monitors are often seen in the heathlands. Stay Hopetoun tonight.

Sep 14 A region of remarkable contrasts, Fitzgerald River National Park lies near Hopetoun. We'll check out the birds on the nearby lagoon before enjoying shrublands including such renowned species as royal hakea, pincushion hakea, four-winged mallee, scarlet banksia, Quaalup bell, and the Barrens regelia, as we travel through the national park. Walk up East Mount Barren this morning. Continue west to Stirling Range. Stay two nights.

Sep 15 A highlight of any visit to Western Australia is the Stirling Range. This scenic national park has over a thousand species of flowering plant and a wonderful array of birds., while a half day walk up onto the summit ridge is one of the most rewarding walks anywhere. Flowers are in abundance and giant eagles soar above.




Sep 16 In the Point Anne sector of Fitzgerald River National Park we'll explore coastal heathlands and look out for Southern Right Whales as they loll in the clear waters just off the shore. We'll then enjoy the wildflower diversity of the Quaalup Homestead property, keep eyes peeled for threatened Carnaby's Cockatoo. After an early dinner we'll continue to Albany. Stay one night.

Sep 17 Returning west via the south coast takes in the southern jarrah-karri forests. We visit Torndirrup National Park with its spectacular granite coastline and a range of coastal shrublands, then continue west into the renowned Jarrah and Karri forests. Walk amidst the canopy of these magnificent trees on a canopy walkway and gain a better understanding of the intricacies of the forest and fire relationship. A new flora introduces itself as the wetter regions of the state are entered. Stay Manjimup.

Sep 18 Near Pemberton lie the fascinating and vast dune systems within d'Entrecasteaux National Park. Morning walk around a dune lake then on to the dunes before returning to Pemberton. We seek out the amazing pitcher plant this afternoon.

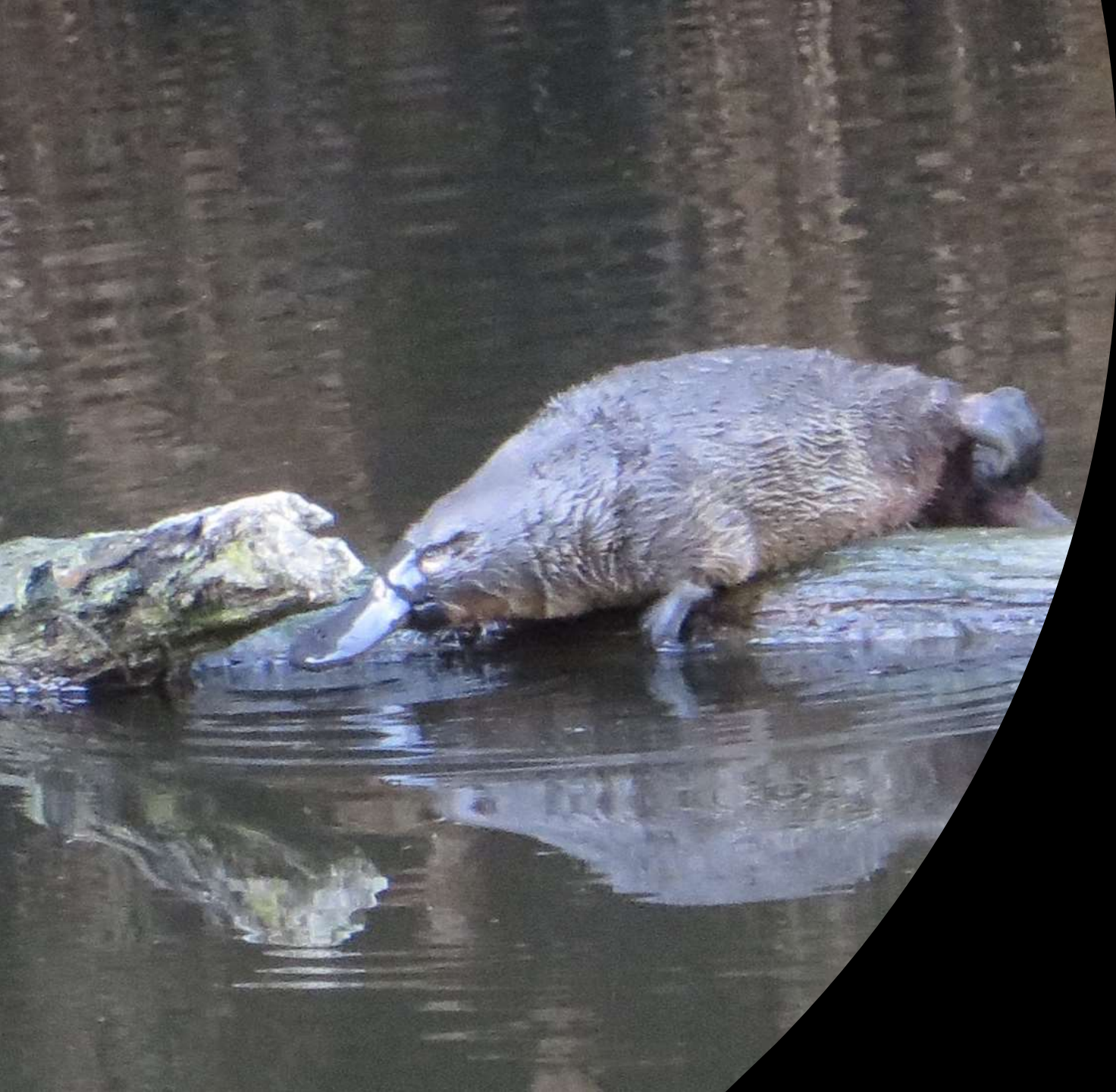
Sep 19 Depart Manjimup for Narrogin. Dryandra is a very special place and one of the few remaining areas of pristine south-western woodland in the state. A huge array of leguminous and Proteaceous shrubs will astound while larger marsupials such as the Black Gloved Wallaby, Tammar Wallaby, Western Brush Tailed Possum and possibly even a Numbat may be encountered. Short beaked Echidnas are regularly also seen foraging during the day. Stay Narrogin tonight.

Sep 20 It is farewell to the Southern region as we complete the drive back to Perth. We'll have to time to stop on route a few times to sample yet more roadside colour and maybe last few orchid species! Early afternoon arrival back at Perth Airport.



Wild Tasmania – Marsupials, Flora and Wilderness

Departing Hobart November 24th 2024



Tasmania is a dramatically beautiful island combining attributes of both Australia and New Zealand, yet with its own very distinctive character, landscapes and attractions.

Tasmania, through a combination of isolation and its rugged mountainous terrain, is still home to a great array of Australian mammals, many of which are now hard to see on the mainland. Marsupials such as the archetypal Tasmanian Devil, Wombats, Kangaroos, Wallabies, Quolls, and Pademelons are foci on this trip; while there are excellent opportunities to view the bizarre Platypus and Echidna, and to view a wonderful diversity of birds such as Fairy Wrens, Cockatoos, Rosellas, Scarlet Robins and Fairy Penguins.



Our circuit around and through the island will also enable a celebration of the Tasmanian high country along with its special plants. Many are floriferous shrubs in multi-coloured profusion, and most are confined to Tasmania. Highlights of sub-alpine and alpine Tasmania will be visits to Mount Field National Park, Cradle Mountain – Lake St Clair National Park, Ben Lomond and Mount Wellington.

Coastal regions such as the Macquarrie Harbour in the west, and Freycinet National Park in the east, match the mountain splendour. Well known Cradle Mountain is stunning, but so too is the rocky coast of Freycinet. Great lodgings enable us to enjoy these areas to the full, while at the same time being able to relax in magnificent surroundings.



Travel is by comfortable small mini-vans equipped with excellent reference libraries.

Accommodation is in pleasant hotels with private facilities.

There will be a maximum group size of 20.

Tour Duration is 17 days ex Hobart.



A Guided Nature Adventure in Tasmania

Cost per Person twin-share for 17 day/16 night tour
\$(NZ)6390.00

Includes:

Services of tour naturalist, Mark Hanger.

All tour travel departing and terminating in Hobart.
All meals excepting lunch and dinner on free day in
Launceston. All accommodation, twin-share with
private facilities in quality hotels and lodges.

Admission fees where applicable – national park
concession fees.

Excursions – Bruny Island ferry, Bruny Island excursion,
Platypus excursion.

Information booklet with background
ecological information & species lists.

Goods and Services Tax of 10%.

For Single Room add \$(NZ)1200.00 per person.

To book, complete booking form along with a deposit of
\$(NZ)900.00.



Nov 24 Arrive Hobart, and transfer to central Hobart accommodation. Stay three nights at The Woolstore Hotel.

Nov 25 The Huon Valley lies south of Hobart. This valley and the nearby Hartz Mountains are our foci today. The canopy walkway at Tahune will feature and enable greater insight to be gained into the myrtle and sassafras forest, while the productive heartland with its picturesque orchards provide a delightful contrast.

Nov 26 Mt Field National Park lies an hour's drive west of Hobart. It features alpine moorlands, spectacular mountain scenery, and an excellent diversity of alpiners including several *Richea*, *Ewartias*, and Tasmanian *Celmisias*. We spend the day at varying altitudes in this national park, enjoying the walk to the Russell Falls, and wandering amidst the sub-alpine flora. Good opportunities for Echidnas and wallabies today along the road verge. Return to Hobart.



Nov 27 This morning take the ferry to the renowned Bruny Island. Travel south to Inala, a 'Land for Wildlife' private reserve. Evening excursion to view wildlife, Possums, Pademelons and Quolls tonight. Stay Bruny Island tonight.

Nov 28 Explore Inala and gain further insights into the endemic wildlife and birdlife of this unique region. It is home to 90 bird species (including all the Tasmanian endemic species), an amazing diversity of plant species and many mammals, reptiles and amphibians. South Bruny National Park encompasses the wild and spectacular southern coast of the island. Take afternoon walks through coastal forest, in particular to view the renowned 'Christmas bells' – *Blandfordia punicea*. Return to Hobart.

Nov 29 Depart for western Tasmania, and Lake St Clair National Park, on the central highlands. We walk through black peppermint forest on the shores of the lake, watching for echidnas. We shall also discover montane banksia woodland, and lakeshore turf flora. Stay Lake St Clair tonight.



Nov 30 This morning, drive through the pass between the Cradle Mountain region and the Franklin-Gordon River National Park. On King William Saddle look for giant irises, asteliads and trigger flowers. This shall bring us to the mining regions in the west, centred on Queenstown. Mining remains an important part of Tasmanian life, but there are continuing conflicts with conservation values. We continue to Strahan on the shores of the MacQuarrie Harbour. Stay Strahan tonight.

Dec 01 Optional cruise on this beautiful harbour and into the Gordon River World Heritage Area. Good opportunities for Rough Faced Shag, Osprey, Snakes, and Huon Pines (Approx. \$A95.00). Mid afternoon drive on to Cradle Valley, and Cradle Mountain National Park. Good opportunities for Echidnas later today along the road verge. Stay Cradle Mountain two nights.

Dec 02 Lake Dove and vicinity. Great hikes to Crater Lake and Cradle Mountain depart from this area. Evening excursion to find Wombats, Pademelons, Bennett's Wallabies, and possible Quolls.



Dec 03 Morning walks along the Cradle Valley boardwalk or walks through Pencil Pine and King Billy Pine dominated forest. We depart Cradle Mountain and travel north towards the coast. This evening you may opt to visit a Short-tailed Shearwater colony on The Nut, or the Fairy penguins that come ashore at the base of the headland. Stay Stanley tonight.

Dec 04 Travel along the coast then inland to Loongana. In an idyllic setting, this locality is unsurpassed for viewing Tasmanian Devils in their natural state, while platypus swim up and down the adjacent river. Stay Mountain Valley Resort.

Dec 05 This morning we shall seek the Platypus in the wild as it glides through the ponds at the Tasmanian Arboretum. Later we travel to Narawntapu National Park. We walk in this coastal park with its abundant marsupial wildlife – good opportunities for Forester's Kangaroos, Tiger Snakes, and to view dune flora and melaleuca-sheoak woodland. Late afternoon arrive Launceston. Stay two nights.



Dec 06 Free day in Launceston. Lunch and dinner not provided today. You may opt to walk and explore in the spectacular Cataract Gorge, or the art and woodcraft galleries in the town.

Dec 07 Day excursion to Ben Lomond National Park. We drive up through eucalyptus forest and past the organ pipes to reach a high elevated plateau at 1500m. Make the most of magnificent scenery, plateau walking and unsurpassed alpine flora. This afternoon travel south through the Midlands to Eastern Tasmania. Stay Bicheno two nights.

Dec 08 Today we discover the delightful surroundings and landscapes of Freycinet National Park. Walk to Wineglass Bay. Granite outcrops, rugged peaks, crystal clear water, stunning orchids and wonderfully barked local eucalypt trees abound. Explore the eastern coastline of the Freycinet Peninsula before returning to Bicheno late afternoon.



Dec 09 Morning drive to Hobart for final night. Mt Wellington provides a dramatic backdrop to the city of Hobart. We gain our final insight into the Tasmanian alpine environment followed by walks through montane dry sclerophyll forest mid-altitude. Stay our final night in Hobart.

Dec 10 Fly on to Melbourne or Sydney this morning to connect with international flights

**FOREST & BIRD
TOURS
SUPPORTING
CONSERVATION**



**Forest
& Bird**
TE REO O TE TAIAO
Giving Nature a Voice

FOR MORE INFORMATION CONTACT

**Mark Hanger 021 680 524 or email
m.hanger@forestandbird.org.nz**

Fundraising for Forest & Bird
Profits from all of these tours will go to the Society.