



Taranaki Maunga framed  
by seagulls and the surf

# North Taranaki Forest & Bird Newsletter Summer 2026

PO Box 1029 New Plymouth 4340

northtaranaki.branch@forestandbird.org.nz

www.facebook.com/forestandbirdtaranaki/

*I hope you have all had a relaxing break, ready to look forward to 2026. This young bird is getting ready for a big year, as are other chicks. Please remember to watch out for them, & try & stay below the high tide mark on beaches over summer.*



Baby Tui on Kaitake Range

## Recent & Upcoming Calendar – F&B & friends

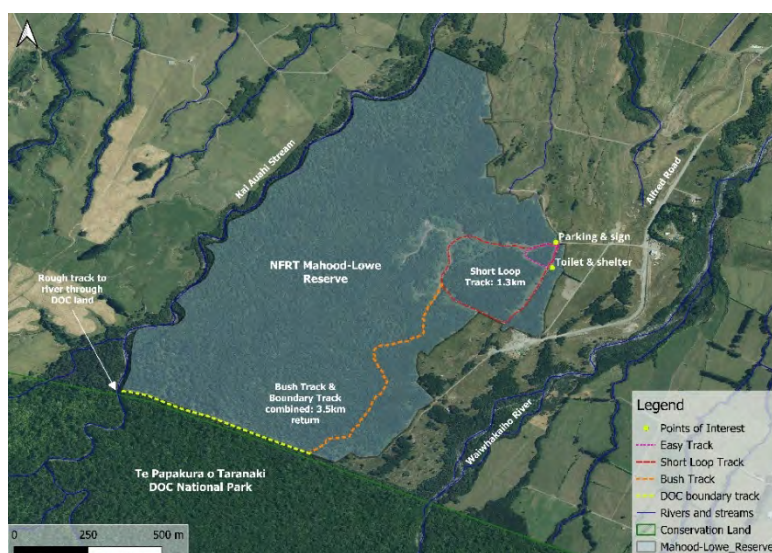
- 2025 Nov 5 Botanical artist Emily Harris – [Puke Ariki](#)
- 6 Biodiversity Corridors – [Wild for Taranaki](#)
- 8 Seedsavers Workshop in Waitara – [Sustainable Taranaki](#)
- 12 & 15 Regenerative Farm Tour – [Sustainable Backyards](#)
- 14 Environmental Awards – [TRC](#)
- 26 [Climate Fresk](#) Workshop – understand Climate Change
- Dec 30 Pilot Bat Monitoring Project until 6 January KCC
- 2026 Jan 30 Nominations close for Conservation Board
- Feb 1 Wetland Trip to Mahood-Lowe Reserve 10.30am
- 13 Submissions close for the Planning Bill & Natural Environment Bill (replacing the RMA)
- 14 KCC Snorkelling
- 15 Denniston information stall at Ngāmotu Market
- Mar 7 Ruapehu Visit Taranaki Anniversary Weekend
- April Possible Urenui beach walk

## UPCOMING EVENTS

### 1 February Wetland Trip to Mahood-Lowe

This reserve is **not** open to the public, so this is a rare opportunity. We meet at 10.30am on Sunday: bring whānau and friends, a picnic lunch, water, a sunhat and a rain jacket and remember good footwear, to the reserve at 840 Alfred Road (just before our mountain) [Taranaki Mahood-Lowe Reserve - NATIVE FOREST RESTORATION TRUST](#). There are toilets, but limited parks so please carpool if you can. Chauncy Ardell, and possibly others from the TRC and the QEII Trust, will be here to tell us about the reserve.

There are various tracks of differing lengths to explore, and just appreciate this space.





### 7-9 March Taranaki Anniversary Ruapehu Visit

We are invited to join in to a trip to Whakapapa for the long weekend, staying in the [F&B Ruapehu Lodge](#) on the nights of Saturday 7<sup>th</sup> and Sunday 8<sup>th</sup>. This is a great opportunity to experience the varied & beautiful central plateau.

The Lodge is near Whakapapa Village, and there are varied-length walks such as Silica Rapids, Taranaki Falls & Tama Lakes. The Gondola is a great way to access more walks & a cafe, & sunsets are wonderful. Whakapapa Village has cafes & ice-creams plus Waimarino (National Park) is just down the road. There is something for everyone.

The Lodge has heaps of space; a well-equipped kitchen, great dining area with a deck and a choice of 3 lounges - one with Ruapehu views. For sleeping there are a mix of rooms and a semi-divided bunk room, there are ample showers, a drying room & free WIFI. Direct booking is here: [Forest and Bird Ruapehu Lodge - Availability](#). This weekend is self-catering, bring your own food and bedding, plus towels etc. Carpooling will be explored as will interesting stops on the way.

- Please register interest with [northtaranaki.branch@forestandbird.org.nz](mailto:northtaranaki.branch@forestandbird.org.nz) for further details.



## Denniston Plateau, South Island



Overlay of Proposed Coal Mine at Denniston Plateau



The Denniston Plateau is a unique high-altitude ecosystem in the West Coast of the South Island. It includes regionally distinct kiwi. This view shows the proposed new 25- year coal mine in red, with the existing Stockton mine the small grey area in the bottom foreground.

This mining proposal is being progressed under the [Fast-track Approvals Act 2024](#).

Forest and Bird are instead asking for this Stewardship land to be reclassified as a Scientific Reserve [Make Denniston a scientific](#)

[reserve](#) | [Forest and Bird](#), with fuller detail in a video: [Save Denniston](#) | [Stand Up For Nature](#). Our branch will have an information stall on this at the Ngāmotu Market on Sunday, 15 February.

## NORTH TARANAKI F&B RESERVES

### Te Wairoa (Lepperton) – Report

A draft pest control checklist and trapping roster is being reviewed, to support new volunteers and ensure consistency. Repairs to fence posts and contractors to support weeding and spraying along the State Highway frontage are being organised.



A pīwakawaka fantail at Te Wairoa



The shed has had a clean out with plastic bins purchased to keep it organised. Three additional possum traps have been purchased, and existing traps have had ramps added with some shifted slightly to better host trees. Some track clearance was done in September.

~ Janica Amooore

### Tom and Don's (Okato) – Report

Fence posts are also being repaired here, to support QEII covenant changes. Permission has been given from the farmer for access to do 5-minute bird counts.

## FROM THE COMMITTEE ...

*If you are able to receive this newsletter via email, please let us know as it will help reduce our costs.*

### Who's who at North Taranaki F&B & KCC

Chair: Janica Amooore

Treasurer: Dawn Mills

Committee Members: Peter Winter, Karen Hamer, Janet Fleury, Anne Collins

KCC: Lee McCracken

The Committee Meeting is on the 4<sup>th</sup> Wednesday each month – please contact any committee member with any suggestions [northtaranaki.branch@forestandbird.org.nz](mailto:northtaranaki.branch@forestandbird.org.nz)

Secretary: Amy Mills

Newsletter: Debra Hitchcock

**Books available to borrow:** Copies of the late Audrey Eagle's two volume 'Complete Trees and Shrubs of New Zealand' were gifted to the branch by Audrey before she left New Plymouth for the South Island. They are now available for members to borrow on request from the branch secretary.

**Publication Date:** 2006  
**Extent:** 2 volumes, 1114 pp in total  
**Illustrations:** 500 full-colour  
**Format:** 280 mm x 230 mm portrait  
**Binding:** 2 hardbacks in a slipcase  
**ISBN:** 9780909010089

**NZ RRP** (incl. GST): \$250.00

**Out of print.**

This beautiful two-volume set brings together Audrey Eagle's botanical artworks from her best-selling 1975 and 1983 publications. It includes over 170 new paintings, bringing the total number of plants to more than 800, all in colour and life-size. Flowers, fruits, and other features are shown in superb detail.

[Eagle's Complete Trees and Shrubs of New Zealand | Te Papa](#)



What we've been up to:

### **December 2025 - January 2026**

Our group was involved in the pilot for a bat monitoring project. We set a bat recorder in a local reserve and left it there for four nights, changing batteries daily. The recorder was returned to F&B Head Office and we are still waiting for the data to be checked to see if any bats were detected.

Coming Up

### **February 2026**

We will be learning to snorkel and will take a look at the Ngāmotu reef, under the guidance and supervision of the Ngāmotu Marine Society.

Email me at [northtaranaki@kcc.org.nz](mailto:northtaranaki@kcc.org.nz) if you're interested in this event

Interested in joining KCC – for ages 5 – 13 years? Visit <https://kcc.org.nz/about/> to find out more.

~ Lee McCracken



Copyright Creative Commons Attribution-NonCommercial 4.0 International

*You may distribute, remix, adapt, and build upon the material in any medium or format for noncommercial purposes only, and only so long as attribution is given to the creator.*